

plateau tournant demi-charge sur 180°

1 charges sur galets

ceinture intérieur

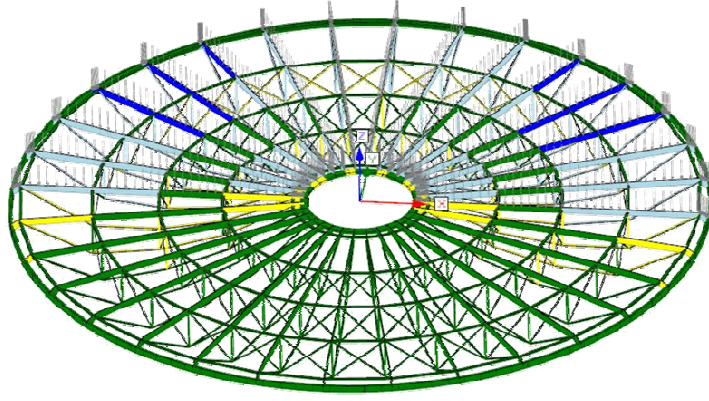
total **151** tonnes
maxi **28.5** tonnes
mini **0.3** tonnes

ceinture extérieur

total **228** tonnes
maxi **15** tonnes
min **1.66** tonnes

charge totale tournante

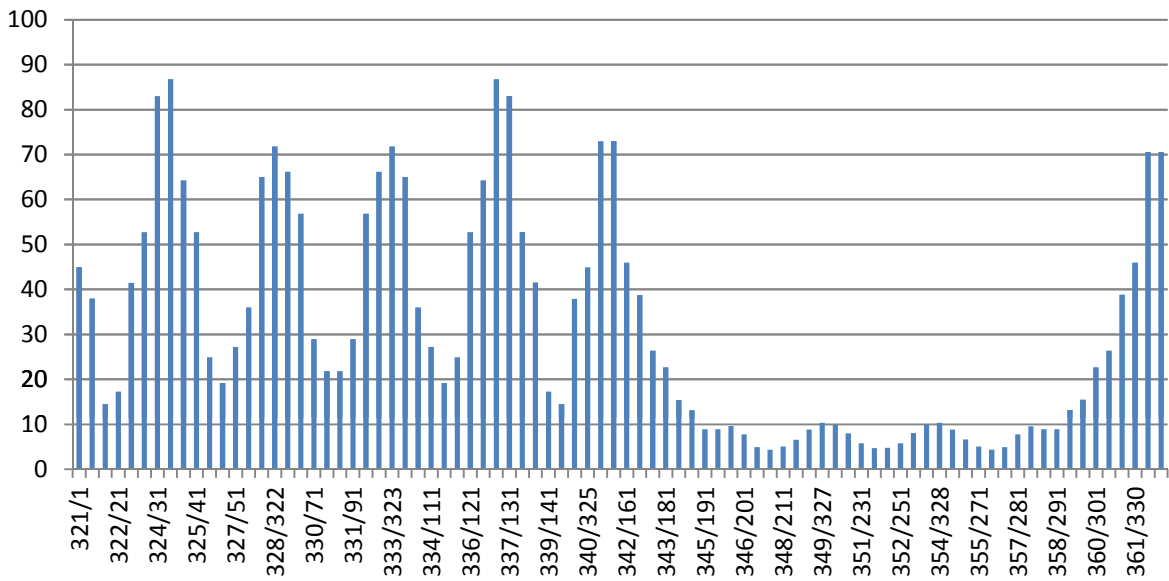
380 tonnes



2 contraintes

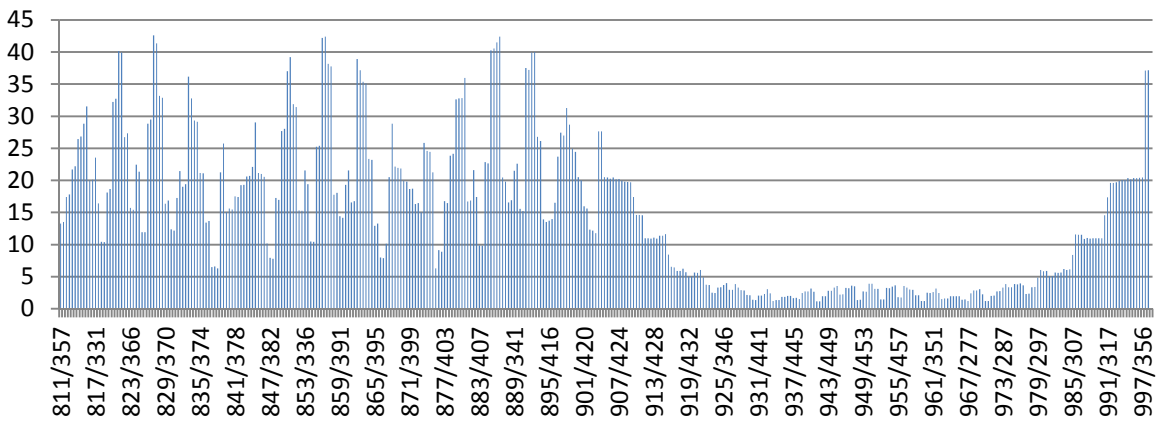
ceinture intérieur

Von Mises (MPa)



ceinture extérieur

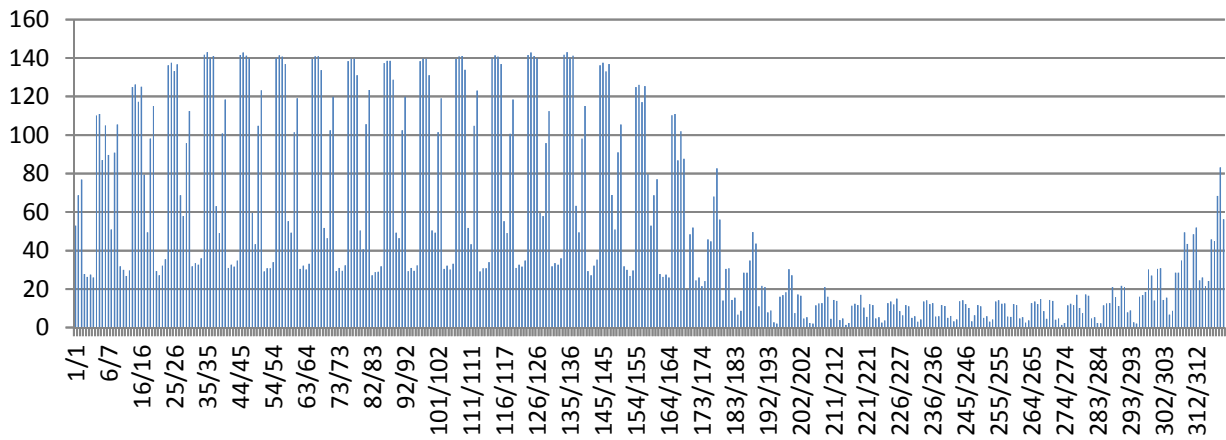
Von Mises (MPa)



2 contraintes (suite)

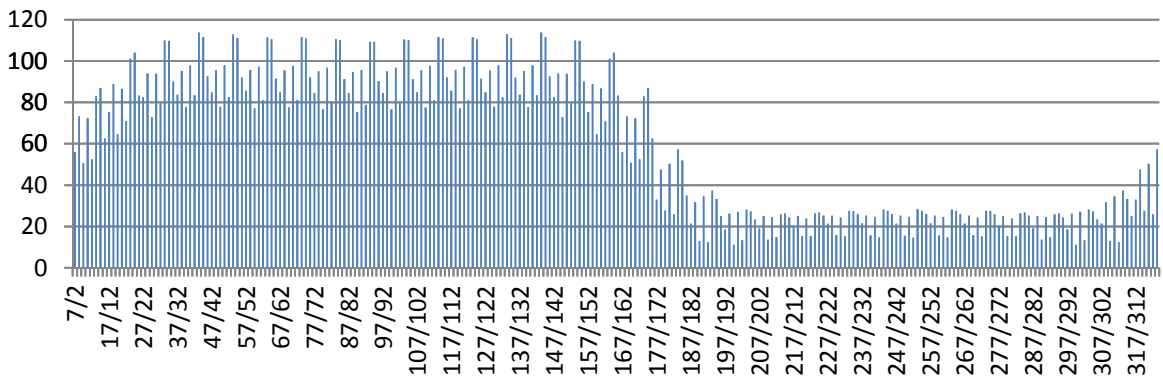
plat 300*20

Von Mises (MPa)



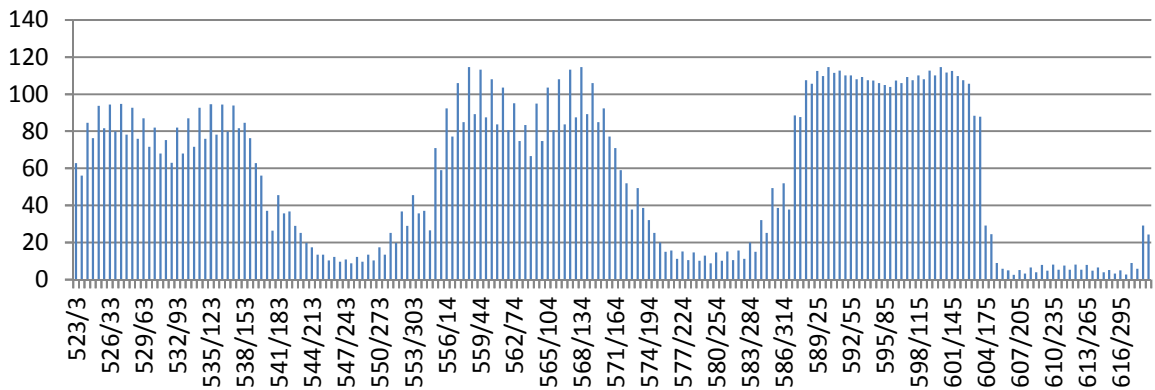
carré 50*50

Von Mises (MPa)



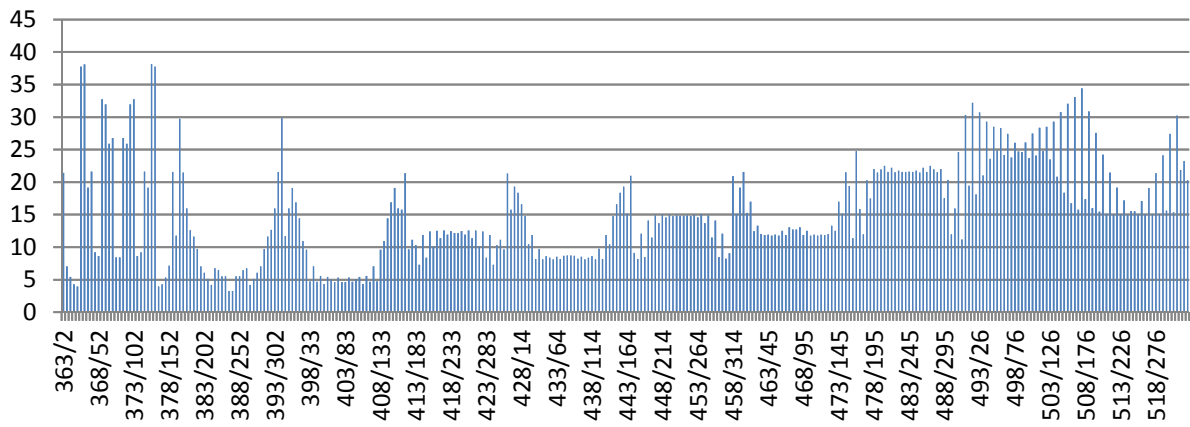
tube 88.9*3.05

Von Mises (MPa)



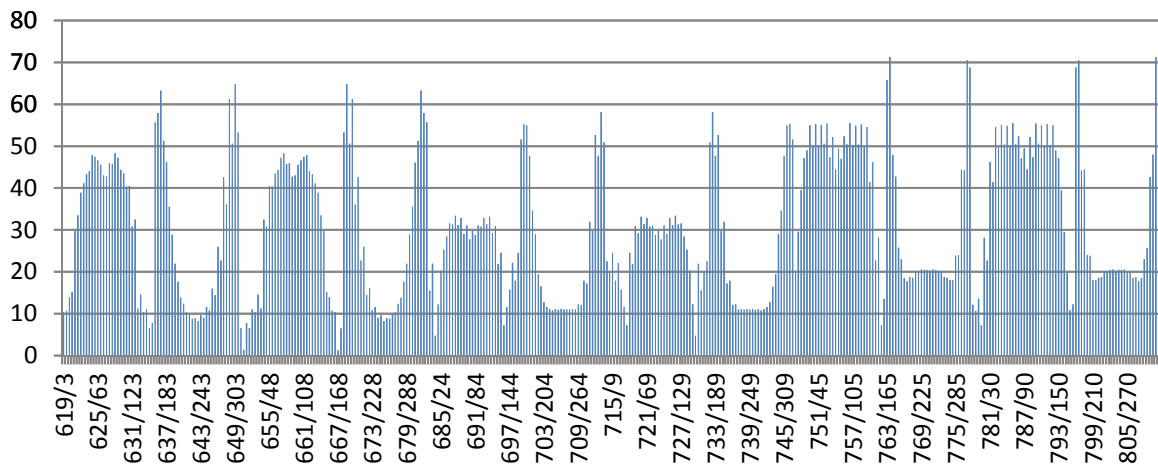
UPE 100

Von Mises (MPa)



plat 50*5

Von Mises (MPa)



3 déplacements maxi

sur x **2.27** mm

sur y **4.3** mm

sur z **13.6** mm

Plateau tournant pleine charge

1 charges sur galets

ceinture intérieur

total **258** tonnes

maxi **26.2** tonnes

mini **24.8** tonnes

ceinture extérieur

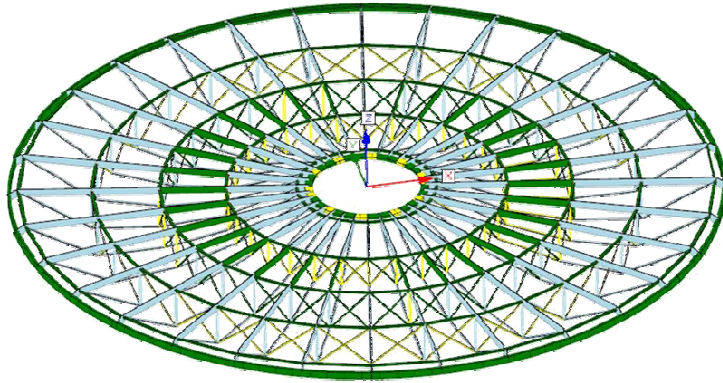
total **388** tonnes

maxi **15.4** tonnes

min **14.8** tonnes

charge totale tournante

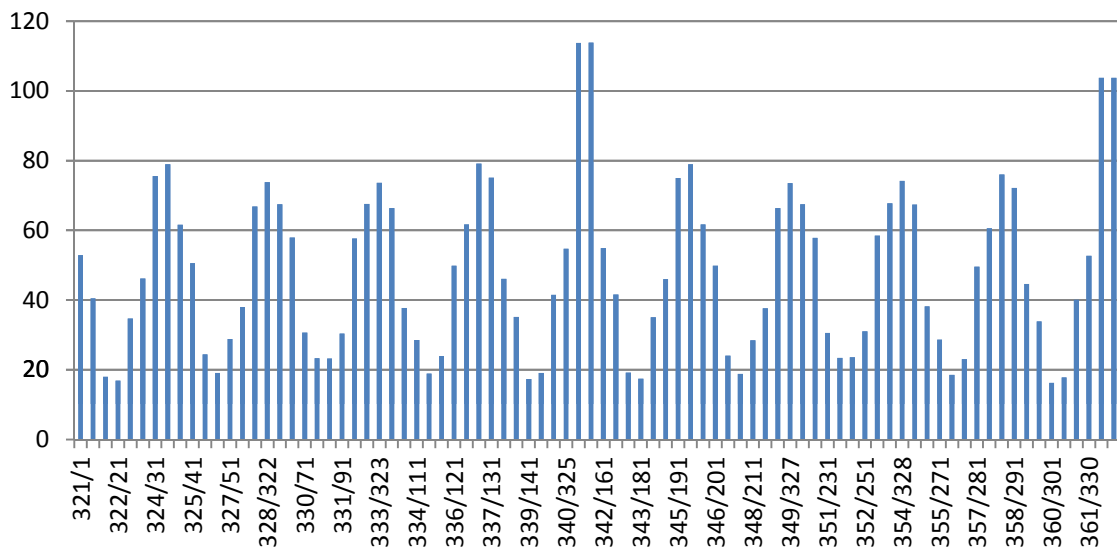
646 tonnes



2 contraintes

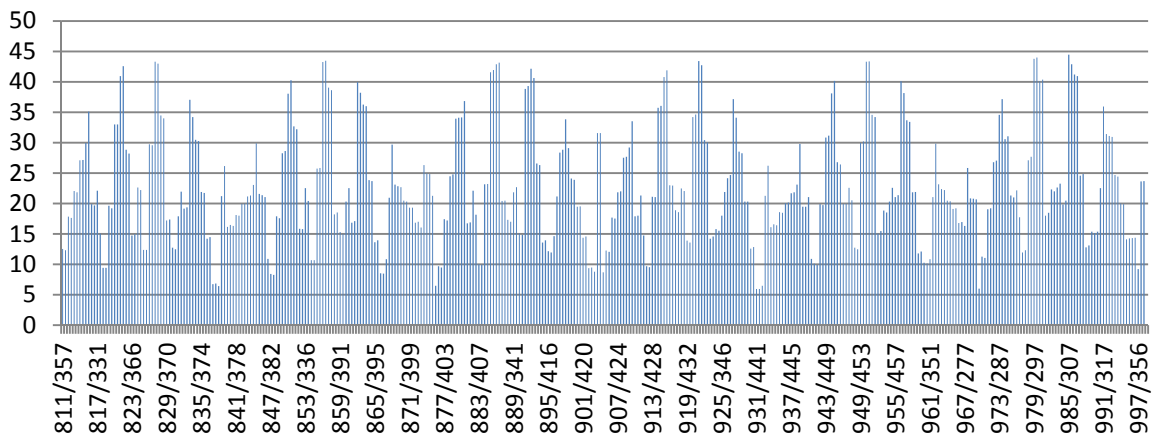
ceinture intérieur

Von Mises (MPa)



ceinture extérieur

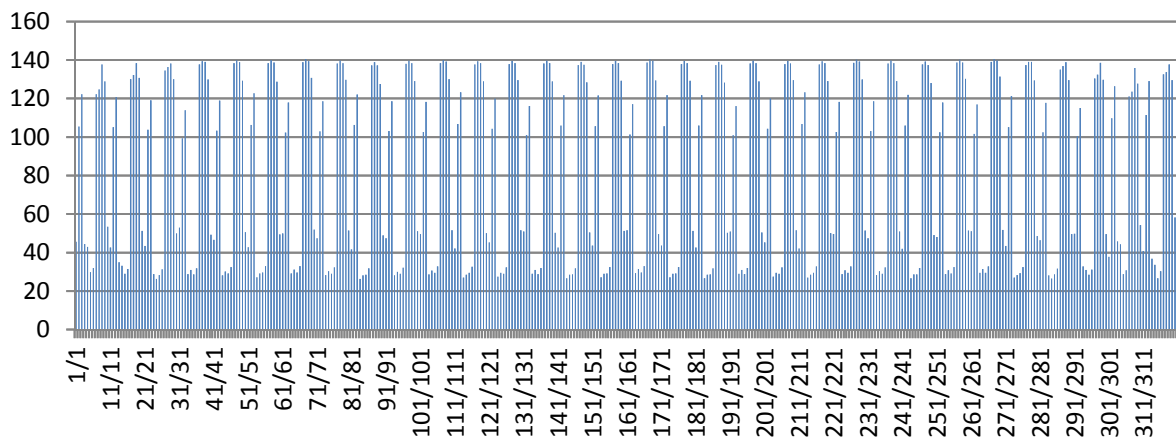
Von Mises (MPa)



2 contraintes (suite)

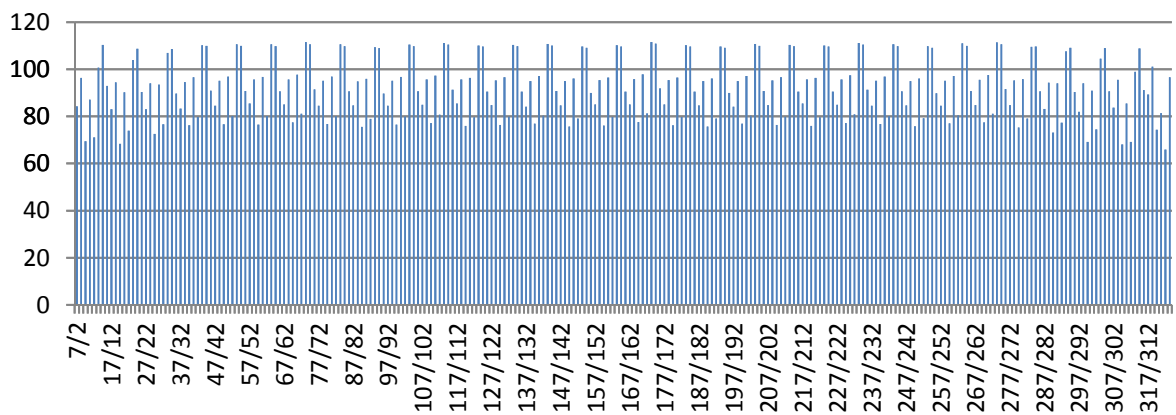
plat 300*20

Von Mises (MPa)



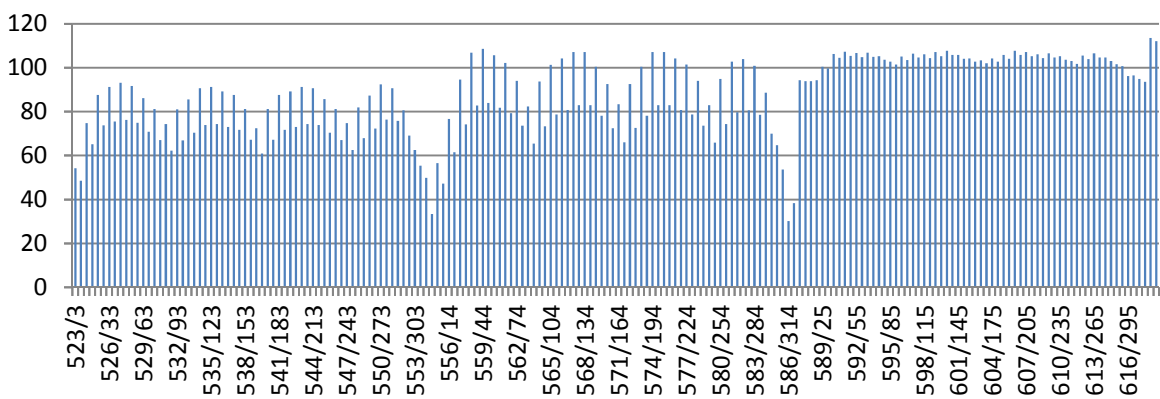
carré 50*50

Von Mises (MPa)



tube 88.9*3.05

Von Mises (MPa)

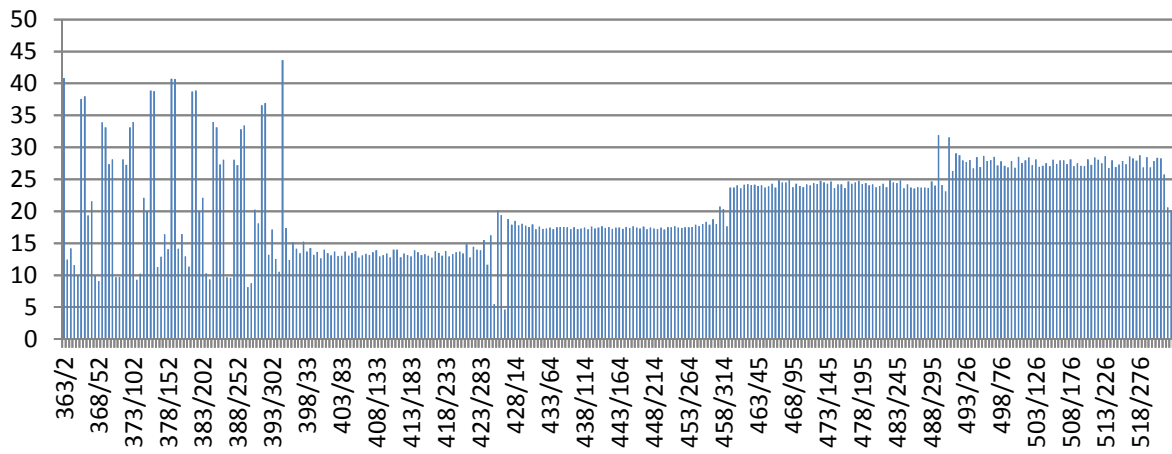


Plateau tournant pleine charge

2 contraintes (suite)

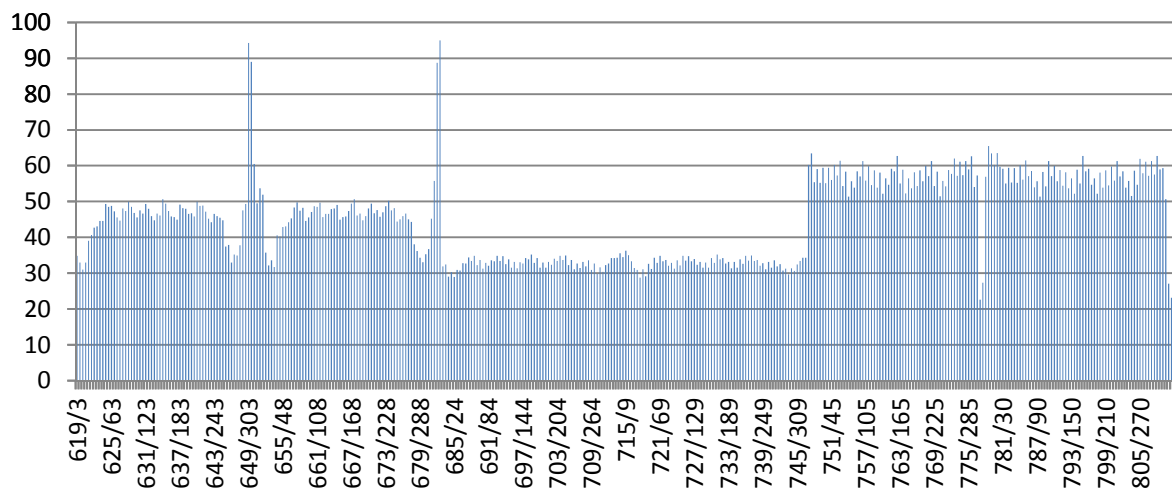
UPE 100

Von Mises (MPa)



plat 50*5

Von Mises (MPa)



3 déplacements maxi

sur x **2.97** mm

sur y **4.3** mm

sur z **13.4** mm